



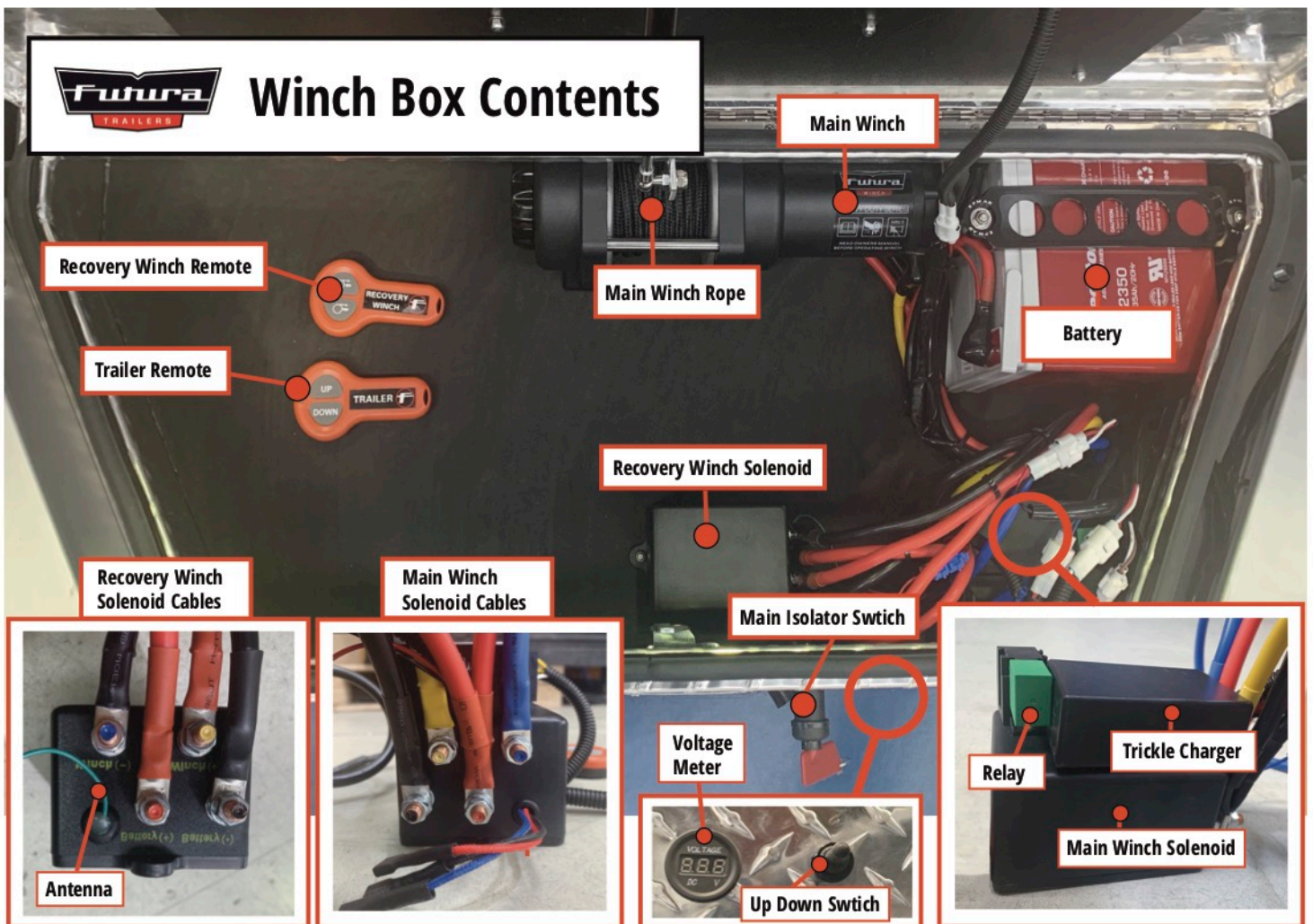
FUTURA LOW LOADER

FAULT FINDING

(GEN3)



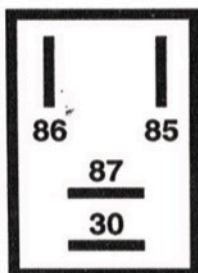
Winch Box Contents



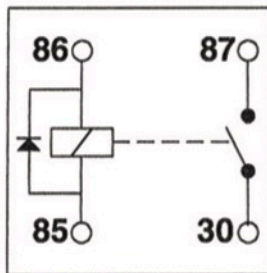
Micro Relay



Pin Layout
DIN 72552



Circuit Diagram

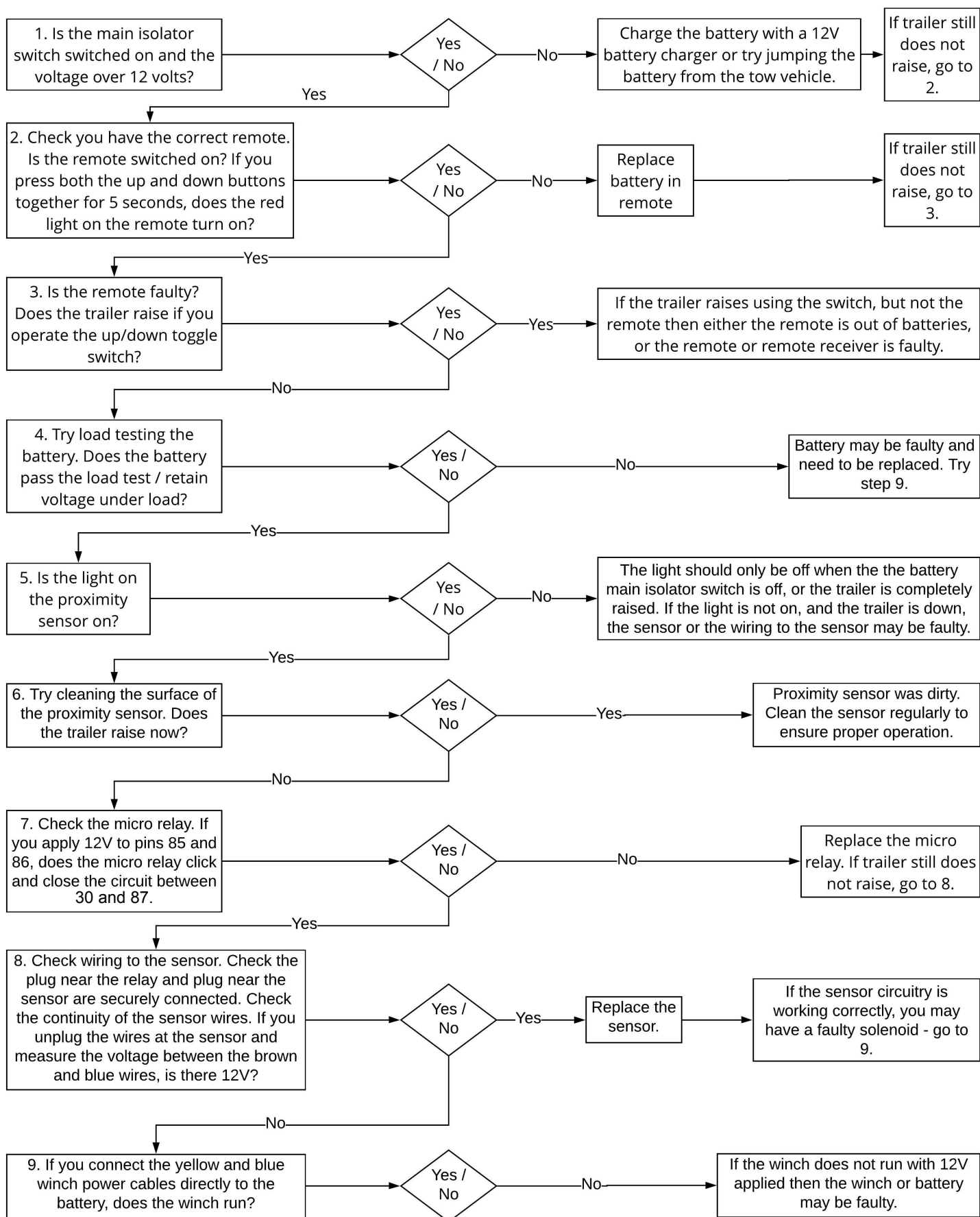


Proximity Sensor

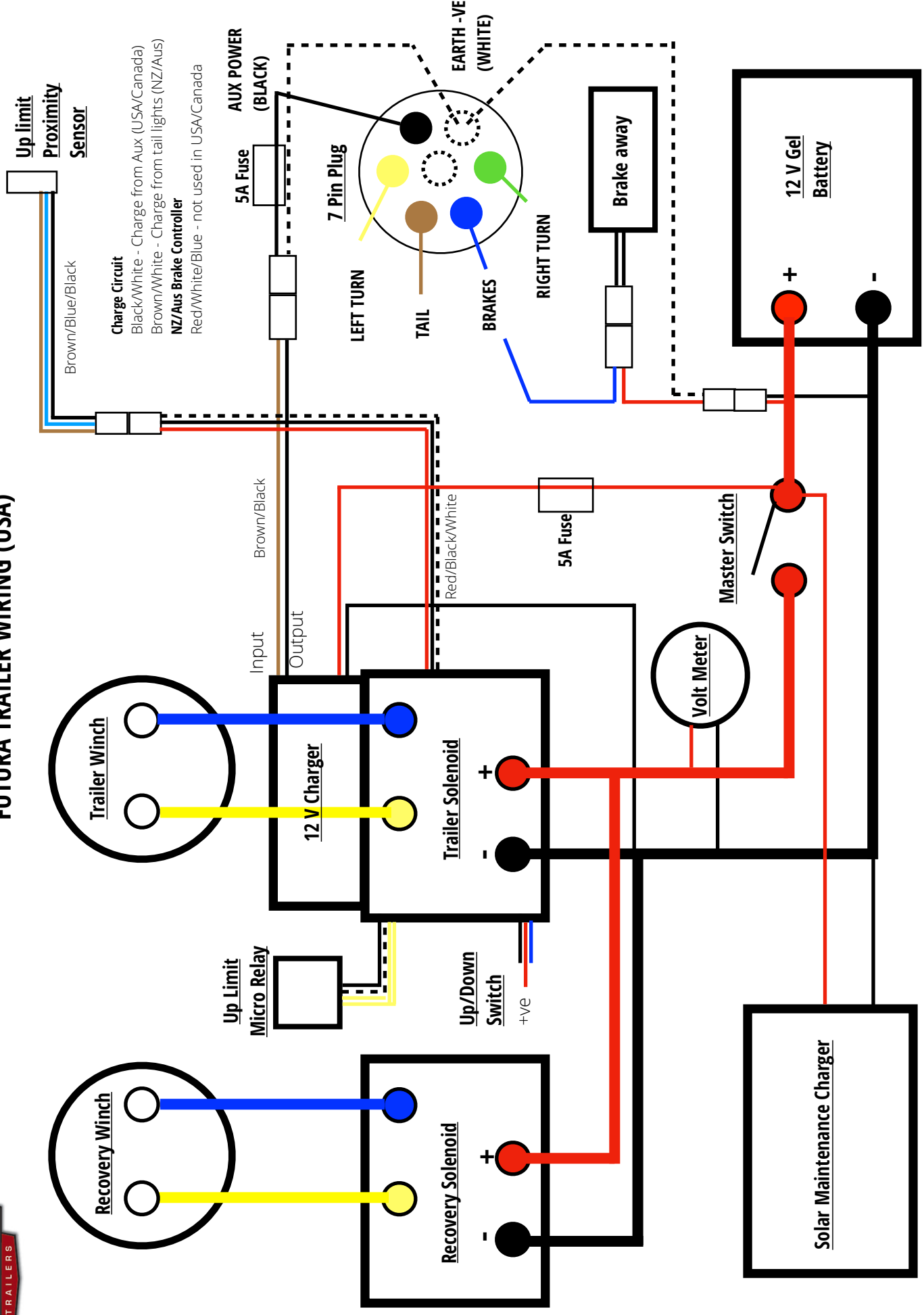


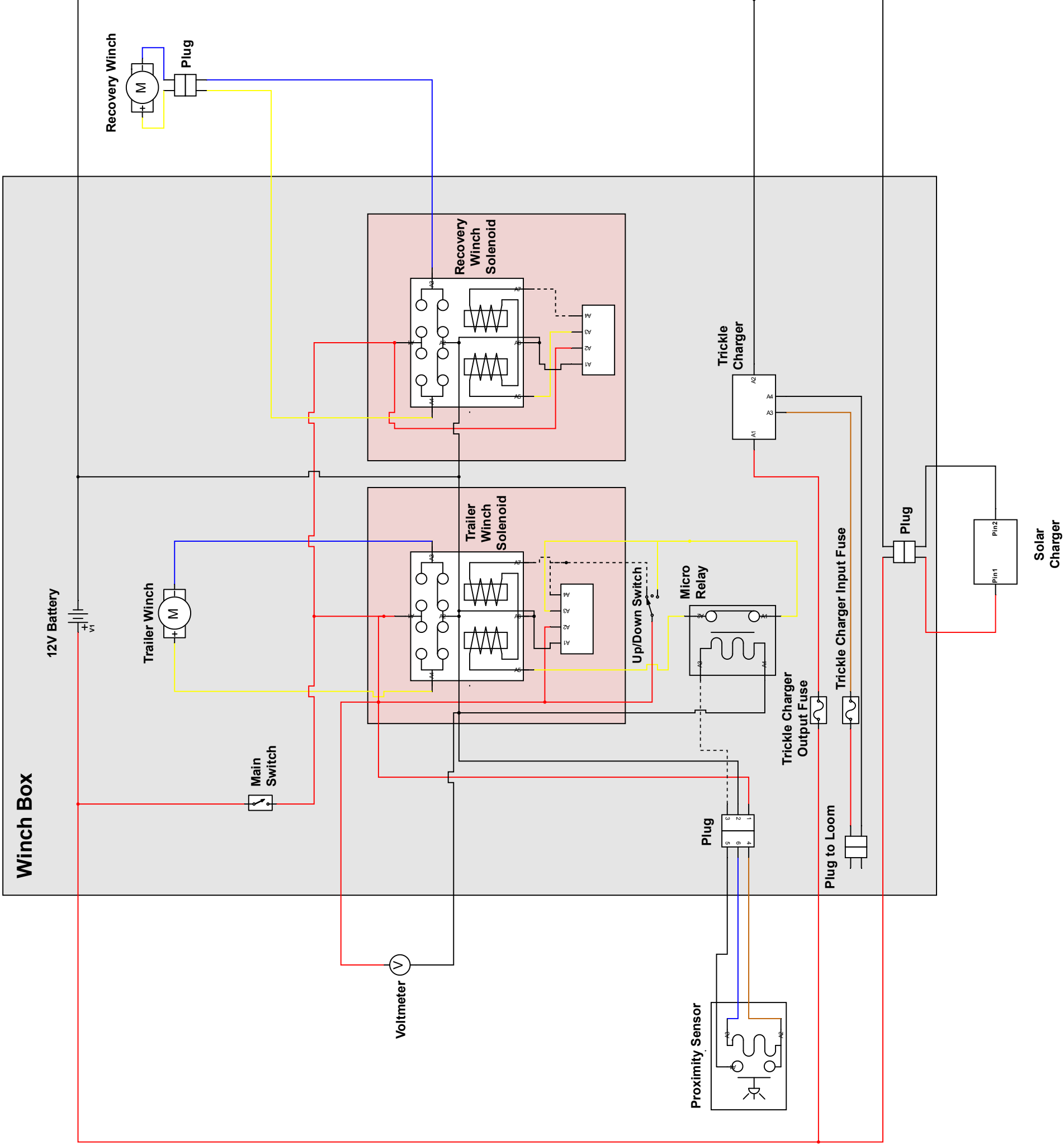


ELECTRICAL FAULT FINDING FLOW CHART



FUTURA TRAILER WIRING (USA)







If all else fails!

Run the winch with no sensor circuit.

If the fault is in the control circuit then bridging terminal **30 and 87** of the micro relay base with a jumper wire will allow the winch to operate in the UP direction. Switch off the battery master switch before installing the jumper wire.

 **WARNING**

PAY CLOSE ATTENTION NOT TO OVERRUN THE TRAILER WINCH UP WHEN OPERATING WITHOUT THE SENSOR CIRCUIT CONNECTED. RELEASE THE UP BUTTON/SWITCH AS SOON AS THE TRAILER IS RAISED. THE WINCH WILL NOT AUTOMATICALLY STOP.

or- To raise the trailer without using the winch:

1. Remove the vehicle from the trailer.
2. Place a jack under the rear galvanised steel mount beam.
3. Raise the trailer up with the jack.
4. Lock in up position with all safety latches engaged.
5. Tie the rigging up under the trailer before towing on the road. (if you have a recovery winch, hook the cables with the winch wire.)

If parts and or service is required:

Please contact service@futuratrailers.com for advice and replacement parts or complete **PARTS AND REPAIR NOTIFICATION** form on our website www.futuratrailers.com/warranty/

 **WARNING**

DO NOT CARRY A LOAD ON THE TRAILER WITHOUT THE WINCH WIRE FULLY TIGHT AND TAKING THE LOAD. TIE THE RIGGING UP UNDER THE TRAILER TO PREVENT IT FROM DRAGGING ON THE GROUND.