

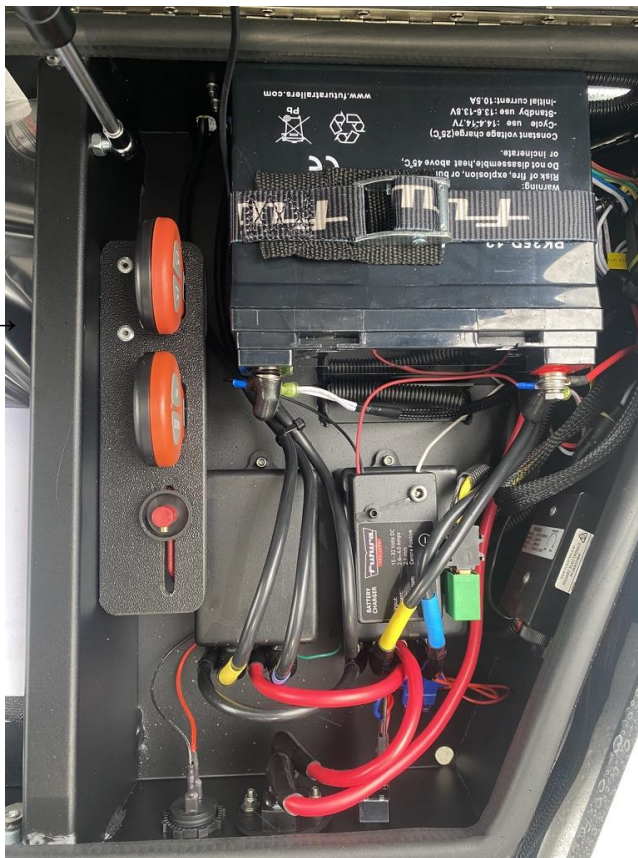


Revision:	1.0
Date:	03 April 2023
Title	Bridging the micro relay

In order to electrically “bridge” the trailer raising winch sensor out of the lift control circuit to allow the winch to run, terminals 30 and 87 of the Micro Relay must be temporarily shorted.

This technique can be used in the situation where either the sensor or sensor wiring has failed or the trailer has been raised with the winch running in the “down” rotation.

**CAUTION** - The trailer raising winch will not stop running when the trailer reaches the top of its travel



To short the Micro Relay terminals use the metal blade of a small screwdriver (or similar) with the Micro Relay connected to its base, prize the Micro Relay out just enough to get the small screw driver blade across the 2 terminals, 30 and 87, the Micro Relay must retain connection to the Micro Relay base.

